



YOUNG WOMEN LEAD CLUB

Transforming girls' lives through **empowerment** and leadership

OBJECTIVES

Young Women LEAD Clubs can be implemented in any high school serving girls in grades 9-12. We encourage students and educators to initiate YWL Clubs in their schools to carry forward and extend the YWL event messages. Our clubs can be part of your schools' extracurricular offerings or advisory groups or club options.

EVERY YWL CLUB RECEIVES:

- Access to the YWL web-based curriculum portal that builds on our tradition of excellence
- Extended year-long learning experiences
- A dynamic, interactive instructional platform focused on workforce skills, leadership development and STEM career mentorship opportunities
- Videos, activities, webinars, and interactive evidence-based content
- Access and inclusion for diverse students to learn from and support one another along their career continuum

BENEFITS

Partnerships

Young Women LEAD Club builds partnerships between high schools, postsecondary institutions, and local businesses.

Mentorships

YWL Club members are provided diverse role models through guest speakers, webinars, conference sessions, and profile videos of women throughout the career continuum.

Career Continuum

YWL Club provides the opportunity for high school girls to explore diverse careers while simultaneously developing their leadership skills and confidence.

Research-Based Practices / Continuous Assessment

YWL utilizes research-based practices to assess and evaluate conference and club content for continuous improvement.

youngwomenlead.com



AT A GLANCE

YWL Club Topics

- Philanthropy
- Financial Literacy
- Inclusive Leadership
- 21st Century Skills
- Confidence
- Career Cluster Explorations

Informed By Research

Young Women LEAD Club content is developed by award-winning educational curriculum writers and content experts. Club content is based in:

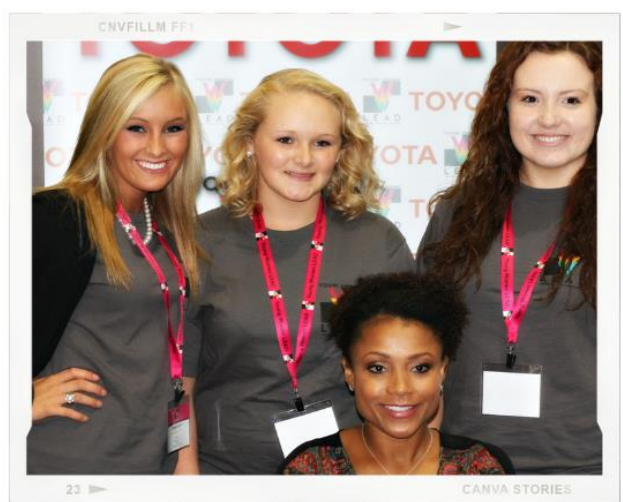
- Mindset Science
- Evidence-Based Practices for High School Girls
- Ethics of Caring
- Neurobiology of Confidence
- Inclusive Leadership



"I would like these young women to pursue their dreams and to not only have takeaways for themselves, but use what they are learning to impact other young ladies at our school."

School Administrator

YWL Club Content



Philanthropy

Teen girls are leaders across the globe in giving of their Time, Talents and Treasure to positively impact their communities. This unit includes:

- Defining Philanthropy
- Call to Action
- T's of Giving
- Club Philanthropy Project
- Grant Maker Direct Giving Opportunity

Financial Literacy

Being financially literate is an essential skill for everyone to learn. This module includes:

- Earning Income
- Economic Decision Making
- Buying Goods and Services
- Saving
- Using Credit
- Financial Investing
- Protecting and Insuring

Inclusive Leadership

Inclusive leadership is committed to diversity and inclusion as the basis of success for leaders.

- Fairness and respect
- Value and belonging
- Confidence and inspiration
- Six traits of an inclusive leader
 - Commitment
 - Courage
 - Cognizance of bias
 - Curiosity
 - Cultural intelligence
 - Collaboration

21st Century Skills

These are skills that students need to succeed in today's and tomorrow's Information Age. The module includes activities to develop:

- Critical Thinking and Creativity
- Collaboration
- Communication
- Information and Media Literacy
- Technology Literacy
- Flexibility
- Leadership
- Initiative
- Productivity
- Social Skills

Confidence

Leaders need confidence to succeed. How can we use neuroscience to build and develop our confidence? In this module, we will study:

- How do we train our brain to be more confident?
- What happens when we feel confident?
- Self-awareness for confidence
- Doing and Imagining
- Unconscious Biases
- Being a Confident Leader
- Communication for Confidence

STEM Career Clusters

Awareness and exploration of careers is essential to encourage girls to pursue careers in STEM. This module includes:

- Self assessment and interest inventories
- Matching skills and interests with career clusters
- Developing a plan of study
- Profiles of women in STEM Career Clusters
- Video Profiles and Interviews

At the *forefront* 365

As young women develop their leadership skills, it's important that they apply what they're learning in order to practice and retain their new knowledge. We believe philanthropy is one of the best avenues for them to utilize their new skills. We'll provide resources for the YWL clubs to understand why it's so important that we all give back to our communities and provide supports for them to do so.

For more information, contact:
info@youngwomenlead.com



3 of the 5 2019 Fall Young Women LEAD Conferences (In-Person)

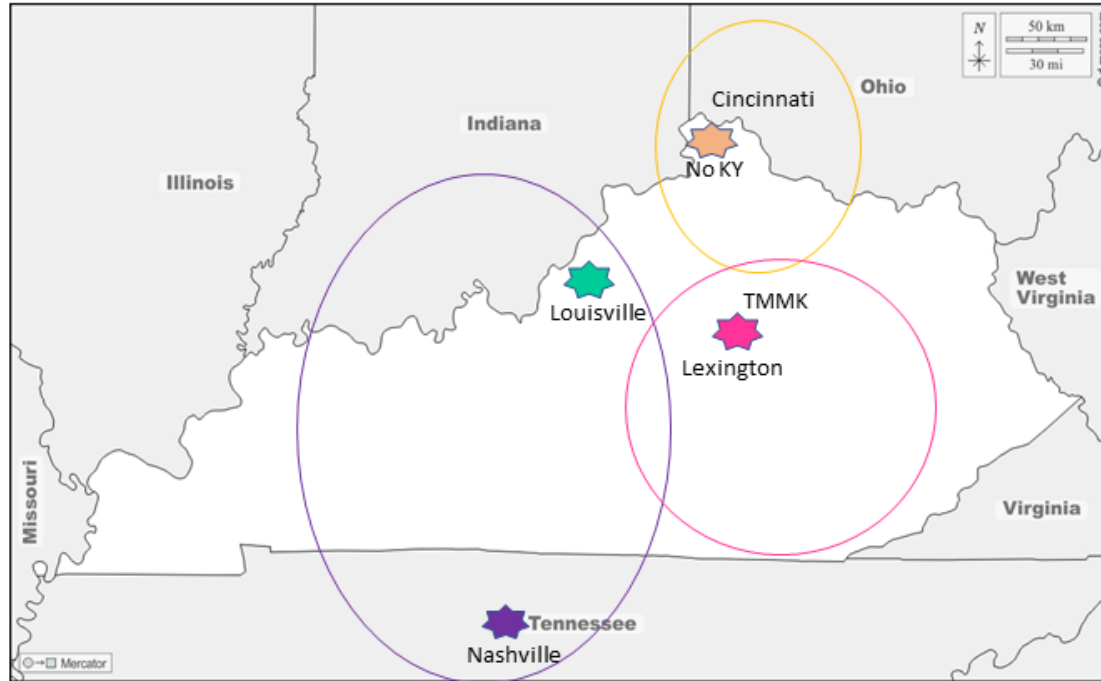
Louisville Minority Demographics

Caucasian – 67.1%
 Black/African American 22.9%
 Hispanic – 4.6%
 Asian – 2.4%
 Blended – 2.7%
Total Minorities – 32.9%

Conference Demographics

Minorities – 52%
 Caucasian – 48%

Location: University of Louisville
 Attendance: 793
 46 schools



NKY/Cincinnati Demographics

Caucasian – 49.8%
 Black/African American – 22.9%
 Hispanic – 4.6%
 Asian – 2.4%
 Blended – 2.7%
Total Minorities – 50.2%

Conference Demographics

Minorities - 32%
 Caucasian – 68%

Location: University of No. Kentucky
 Attendance: 851
 43 Schools

Lexington Demographics

Caucasian – 71.1%
 Black/African American- 14.5%
 Hispanic – 7.2%
 Asian – 3.8%
 Blended – 3.3%
Total Minorities – 28.9%

Conference Demographics

Caucasian – 64%
 Black/African American – 25%
 Hispanic – 3%
 Asian – 3%
 Blended – 5%
Total Minorities – 36%

Location: Eastern KY University

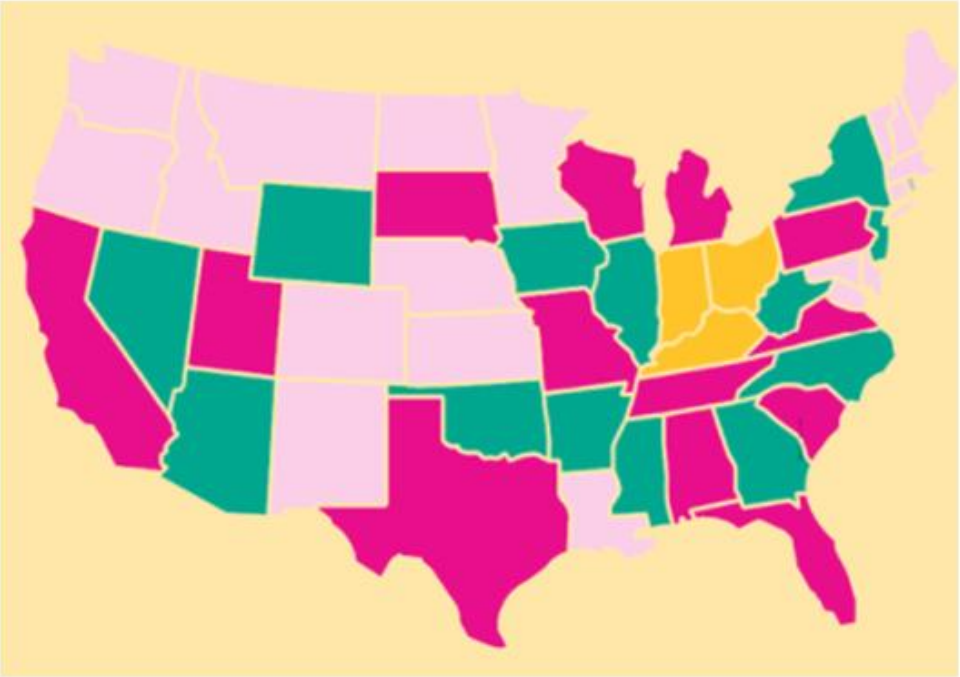
Attendance: 847
 42 Schools

2020 Fall Virtual Young Women LEAD Conference

Location: 28 States
Attendees: 2,500 Students
207 Schools

Demographics

Caucasian – 63%
Black/African American - 26%
Hispanic – 4%
Blended – 4%
Asian – 2%
Native – 1%
Total Minorities – 36%



Legend

2008-2019 Conferences
47 conferences in 6 locations

2020 Virtual conference